

EXHIBIT E: 2022 AQUATHOLK / CLP TREATMENT AREAS MAP 1 of 2
ELLERY SOUTH / BEMUS POINT
APPROVED FOR TREATMENT- Permit AV92022-048

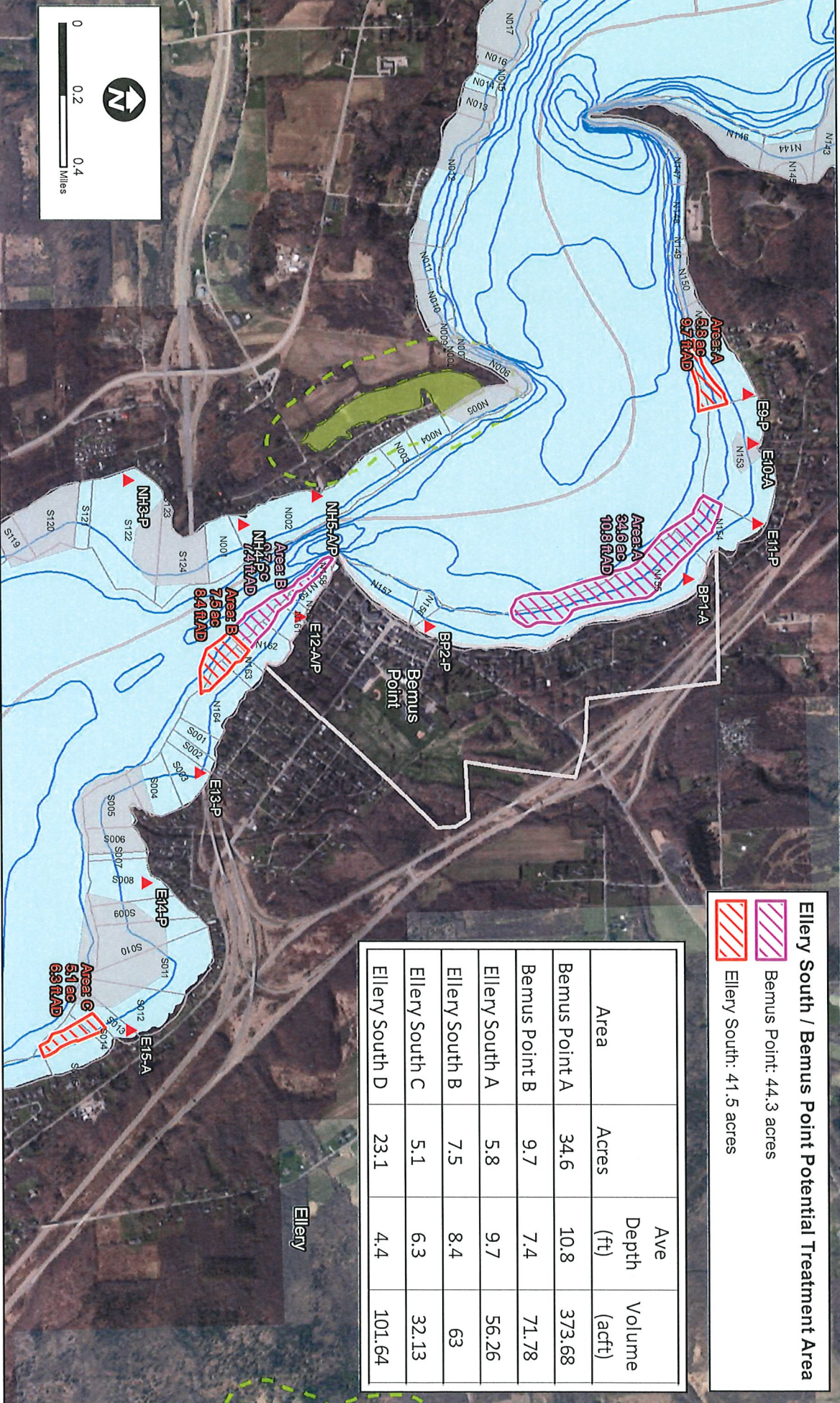
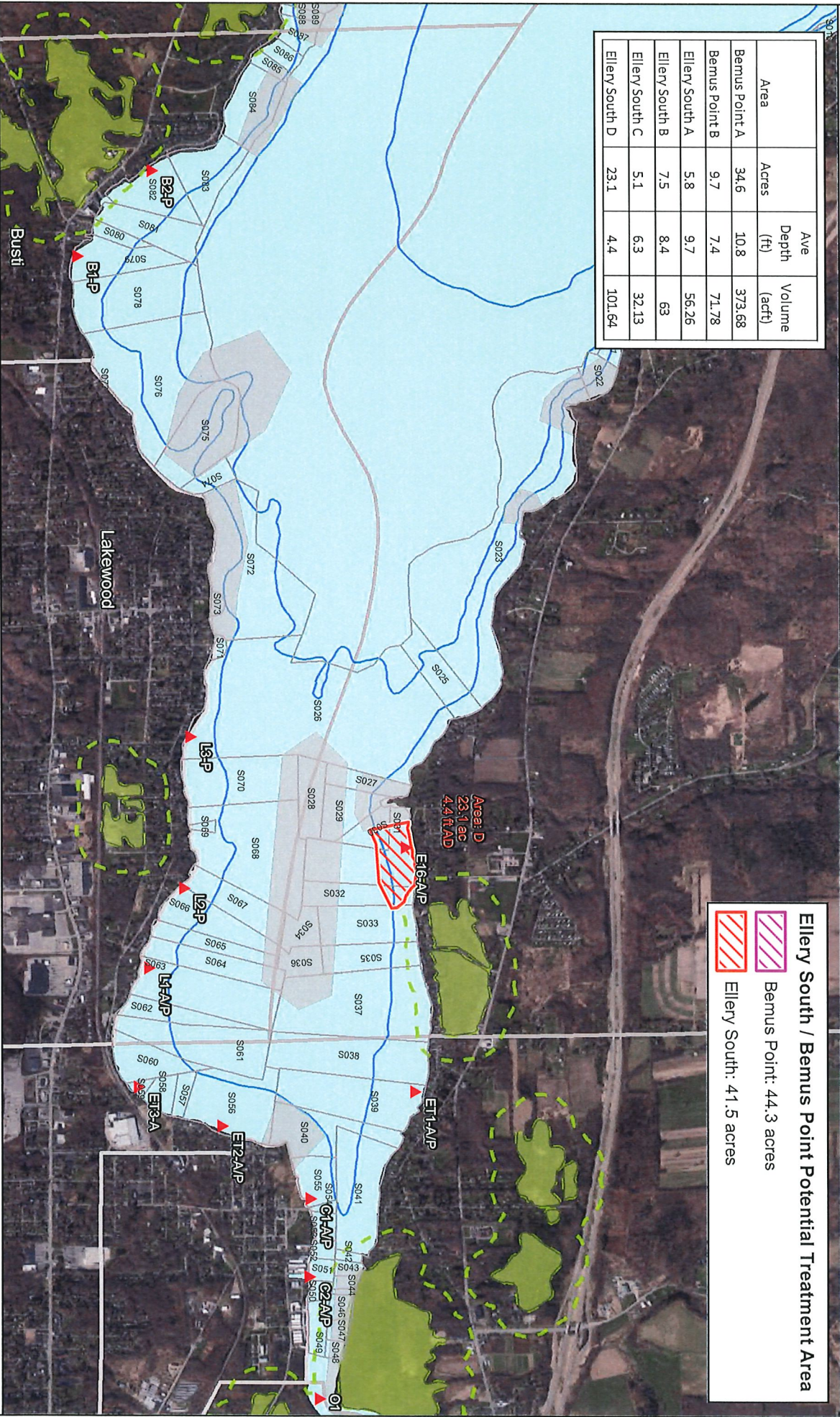


EXHIBIT E: 2022 AQUATHOL K / CLP TREATMENT AREAS MAP 2 of 2
ELLERY SOUTH / BEMUS POINT
APPROVED FOR TREATMENT- Permit AV92022-048

| Area | Acres | Ave Depth (ft) | Volume (acft) |
|----------------|-------|----------------|---------------|
| Bemus Point A | 34.6 | 10.8 | 373.68 |
| Bemus Point B | 9.7 | 7.4 | 71.78 |
| Ellery South A | 5.8 | 9.7 | 56.26 |
| Ellery South B | 7.5 | 8.4 | 63 |
| Ellery South C | 5.1 | 6.3 | 32.13 |
| Ellery South D | 23.1 | 4.4 | 101.64 |

Ellery South / Bemus Point Potential Treatment Area

- Bemus Point: 44.3 acres
- Ellery South: 41.5 acres



ELLERY SOUTH /
BEMUS POINT
CHAUTAUQUA LAKE

NYSDEC FWW
 FWW Checkzone
 Macrophyte Management Zone

2022 DEC Fish Habitat Confirmed Zones
 Fish habitat

0 0.275 0.55
Miles