

Clymer Solar

Public Hearing
July 11th, 2023

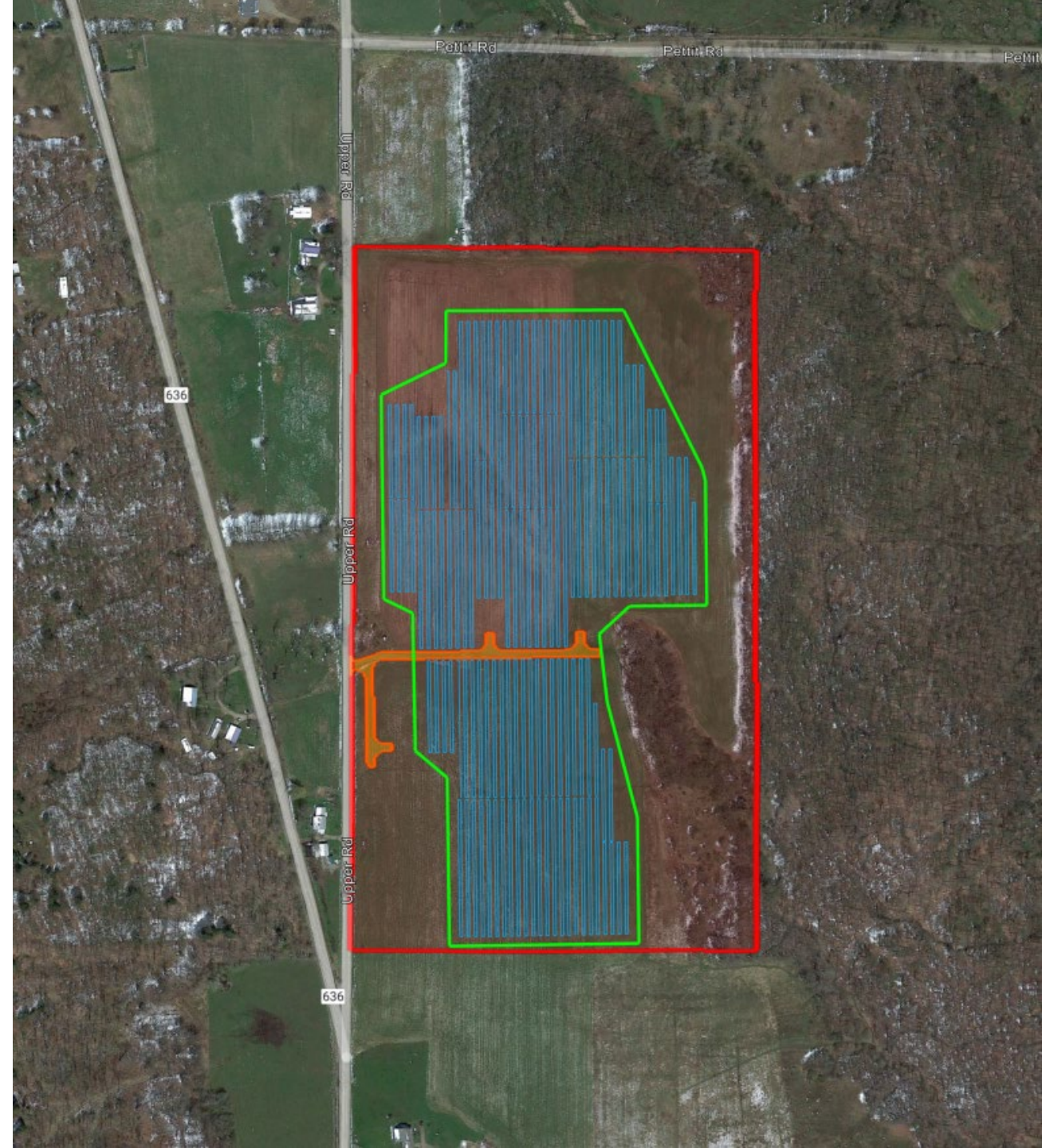
Andy Welch
Senior Project Development Manager
awelch@ric.energy

RIC Energy

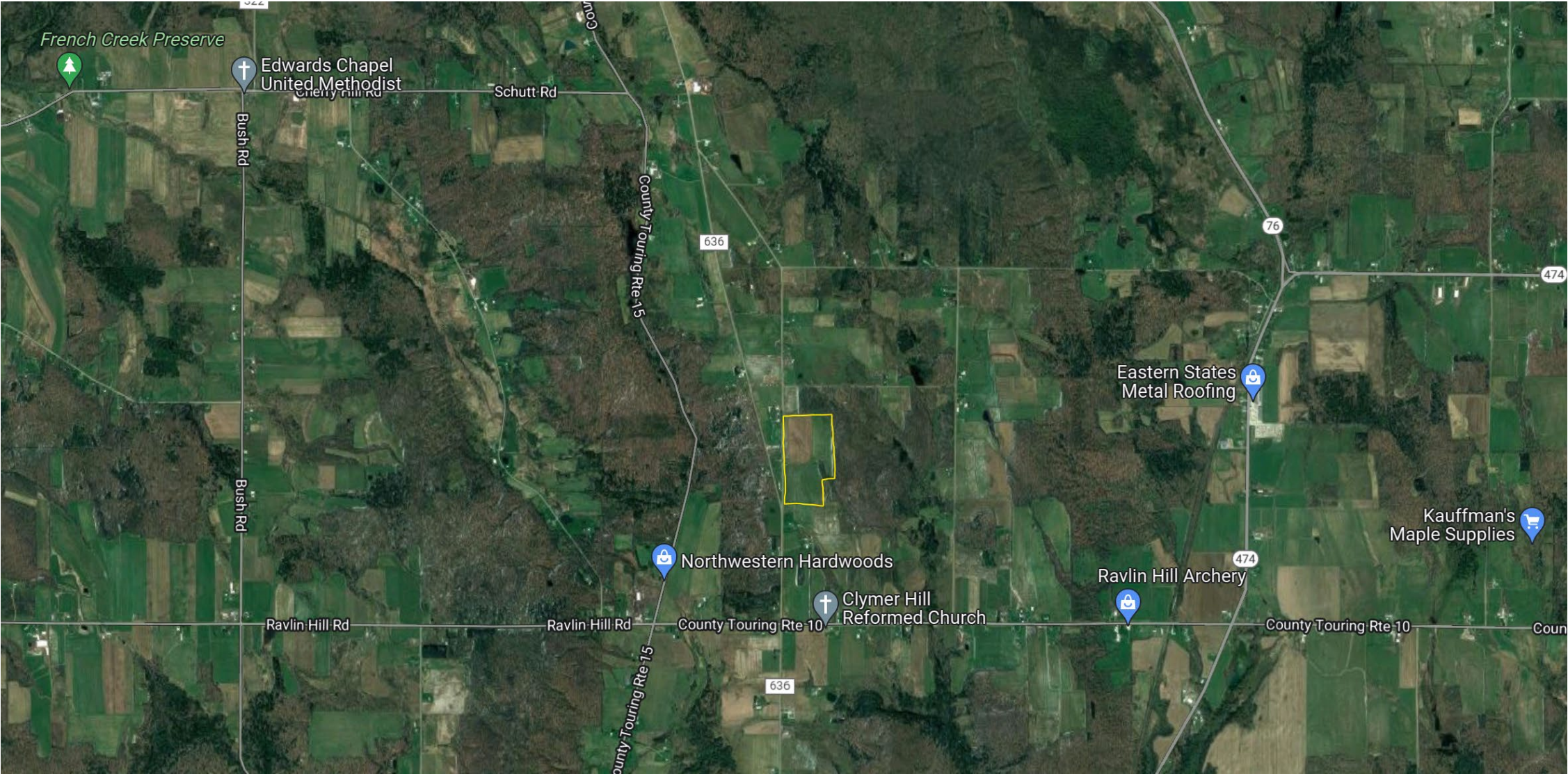
- A global company specializing in renewable energy development that prides itself on due diligence and collaboration with local communities to provide the most value toward a sustainable social project.
 - RIC Development, LLC (AKA “RIC USA”)
 - 12 years in the US, headquartered in NYS
 - Project Applicant: Clymer PV, LLC
 - Project Name: Clymer Solar

Clymer Solar

- 1548 Upper Road, Panama, Chautauqua County, New York
- Landowners: Leonard C Neckers
- Parcel size: 50.2 acres
- Project site: 29.8 acres

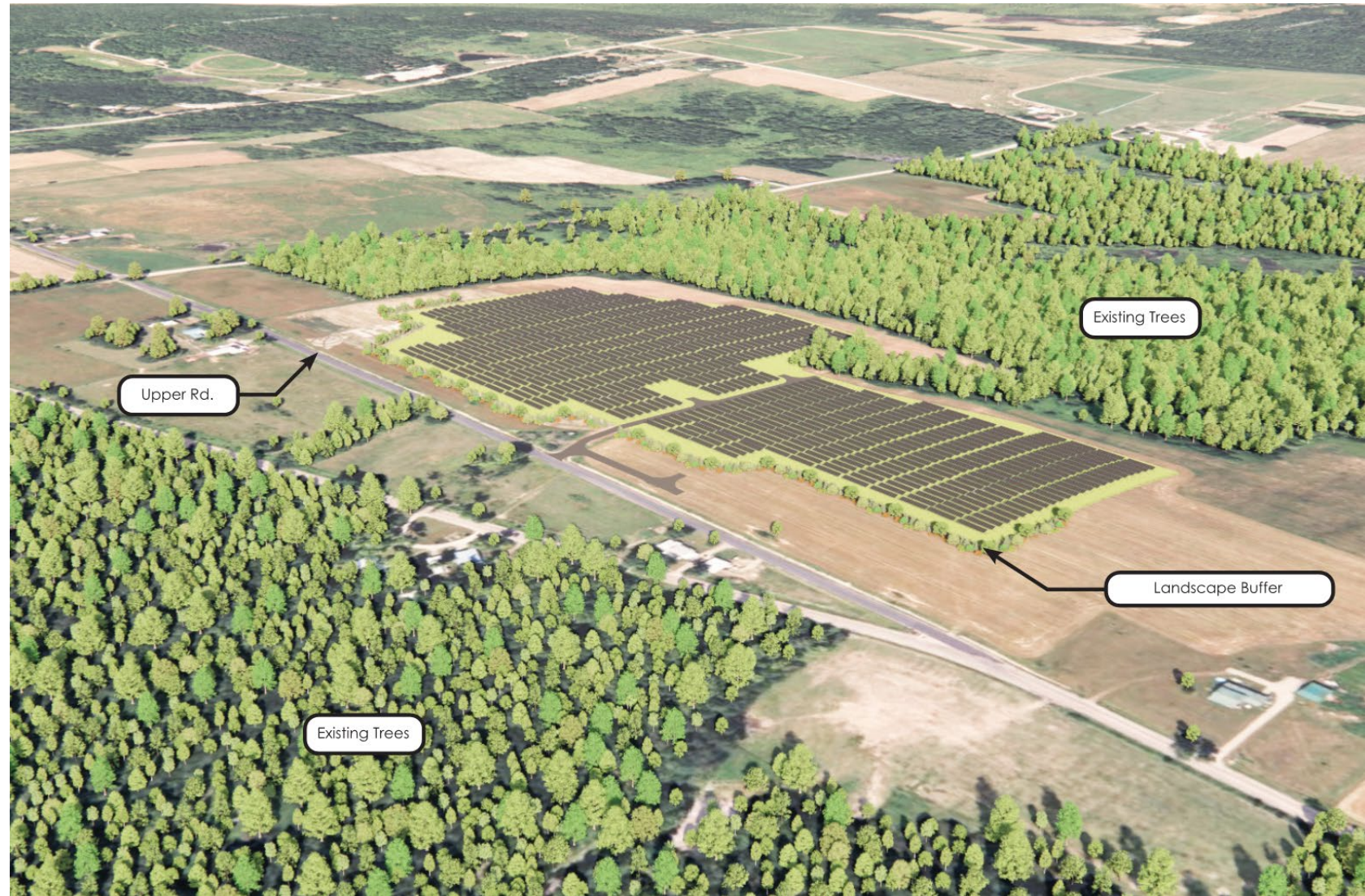


Surrounding Area



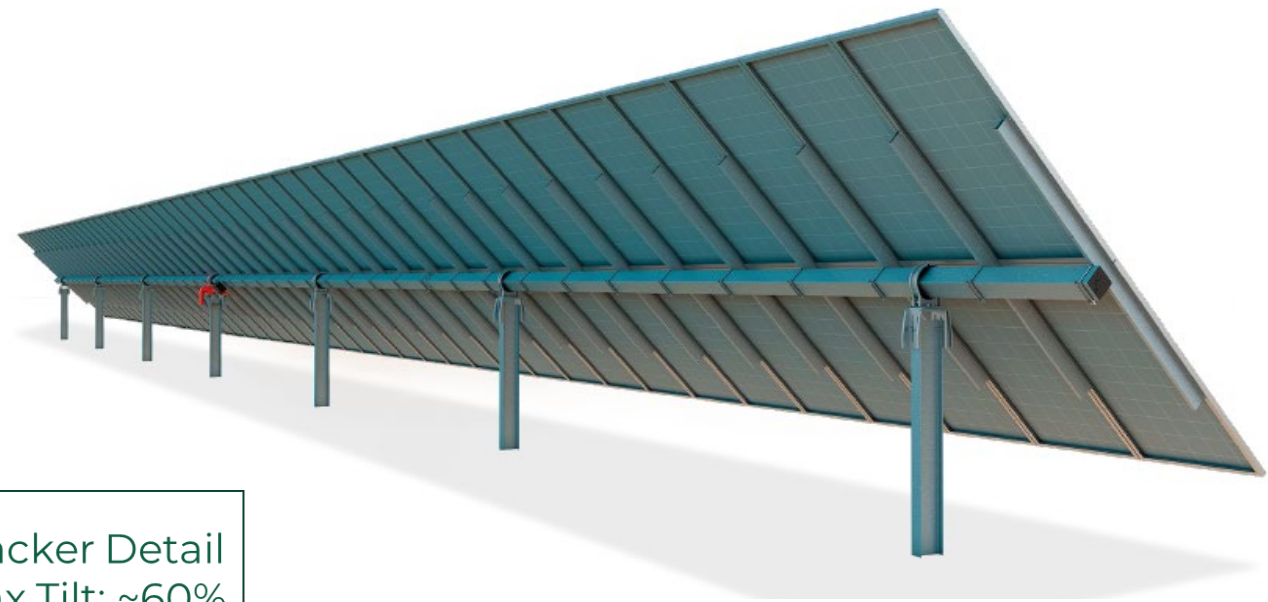
Project Description

- Community Solar Project
- 5 MW AC
- Underground line to utility interconnect poles
- Driveway entrance Upper Road
- No trees cut
- Landscaping buffer added with new trees

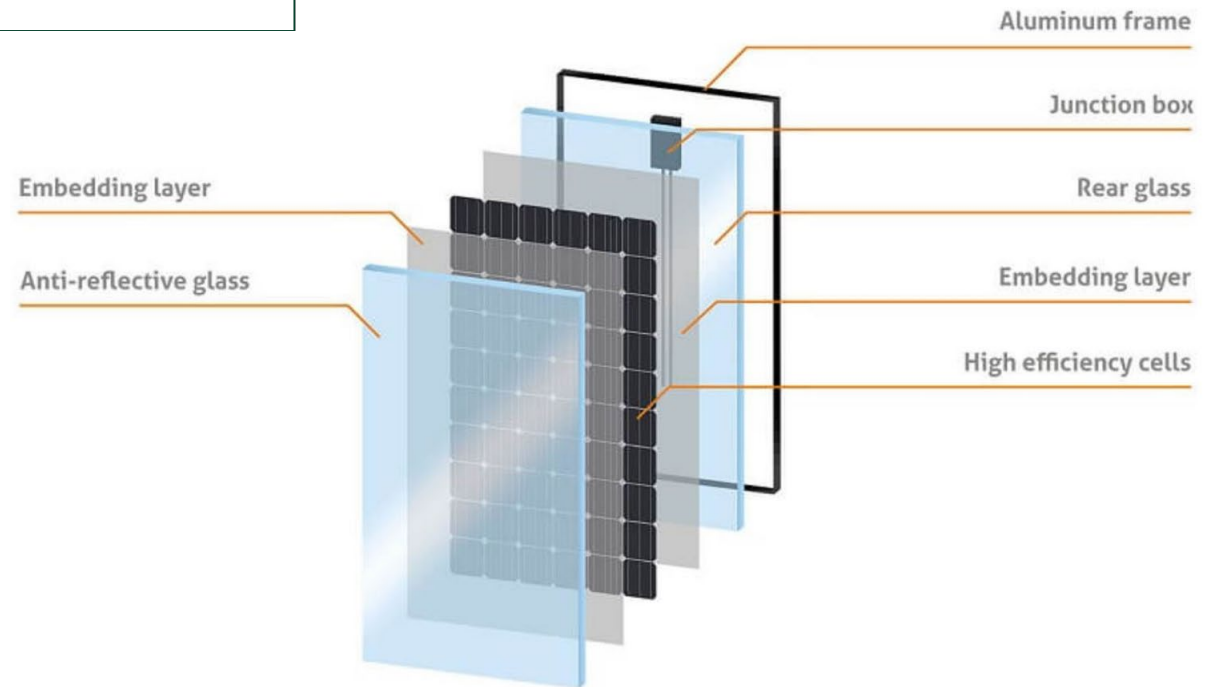


Technology

- Mono-crystalline photovoltaic cells
- Single-axis tracker (follows the sun)
- Bifacial panel (over 10,000)
- Under 10 feet tall
- Connected to 23 DC to AC inverters
- 2 transformers to step up the voltage to match 13.2 KV



Tracker Detail
Max Tilt: ~60%



typical bifacial mono-crystalline panel

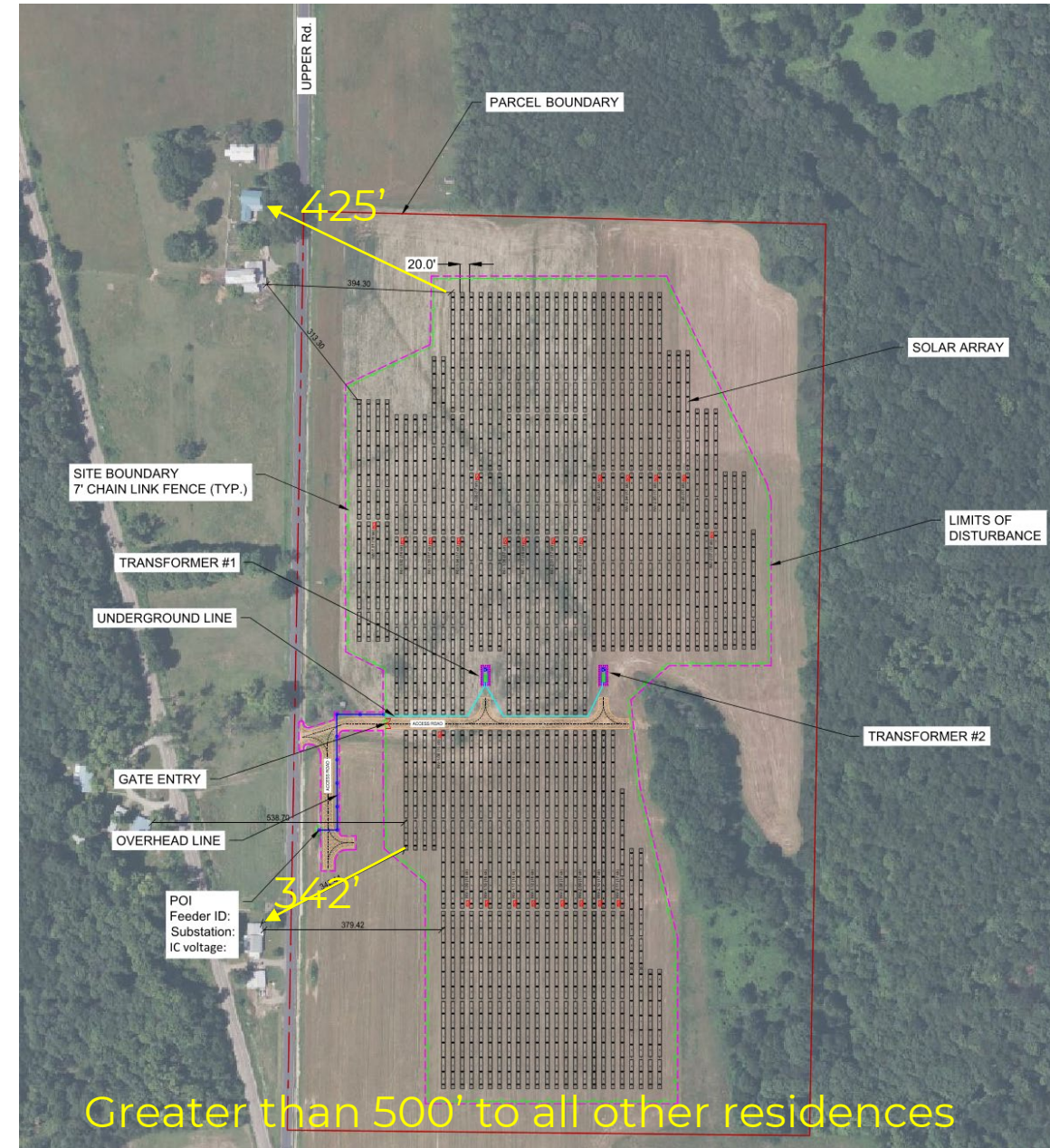
Setbacks - Section 6 Waiver requested

Property boundaries

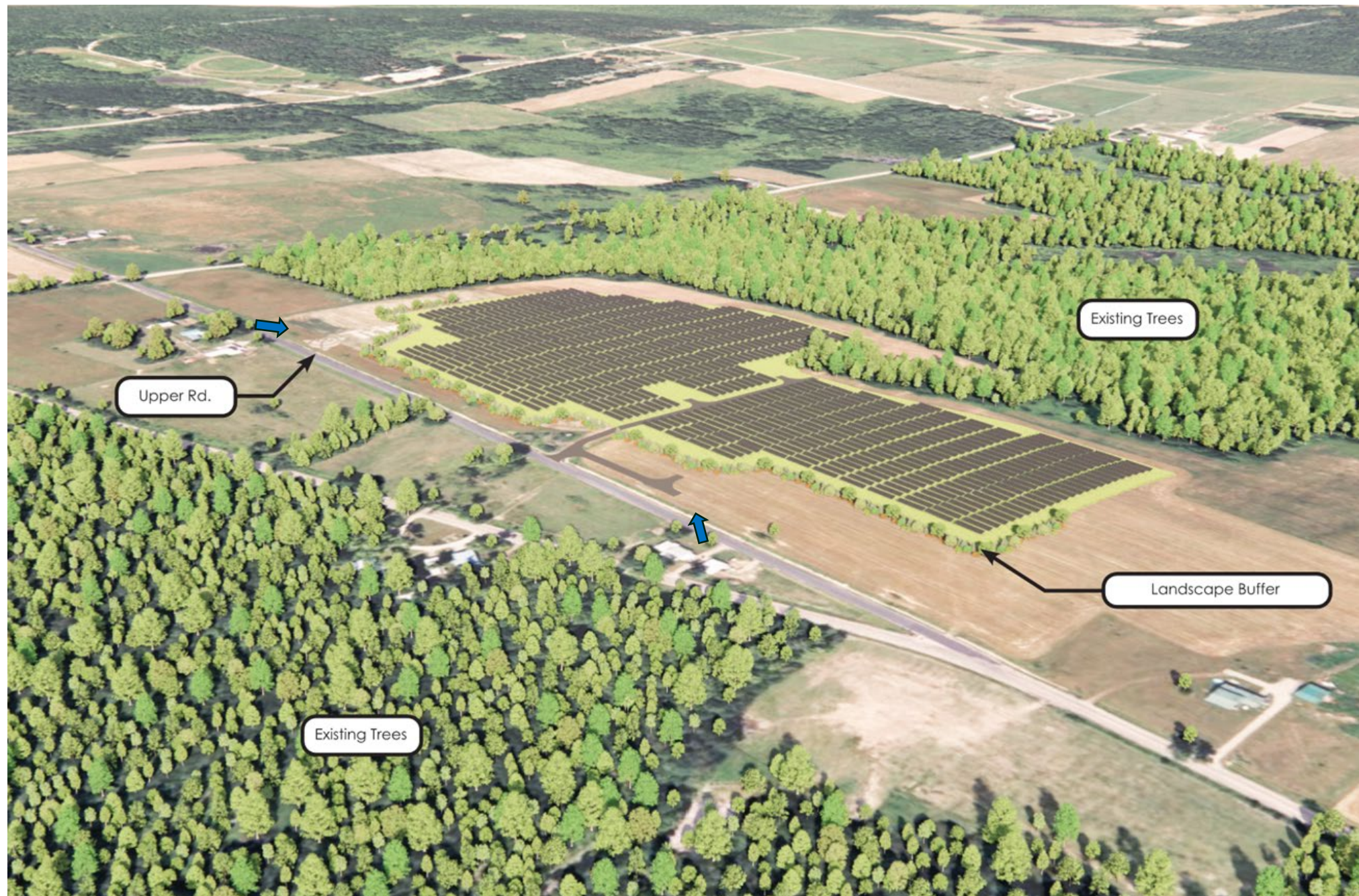
- Northern 154.9 feet
- Eastern 136.2 feet
- Southern 91.7 feet
- Western 102.1 feet

Residences

- Across Upper Road
- Landscaping blocks view
- 1451 Upper Road
 - 313.3 feet to barn
 - 425 feet to residence
- 1482 Clymer Hill Road
 - 342 feet to residence



Layout





VIEW 1:
EXISTING CONDITIONS



Proposed landscape buffer
(simulated at maturity 15-25 years)

Approximate location
of solar arrays (behind
landscape screening)

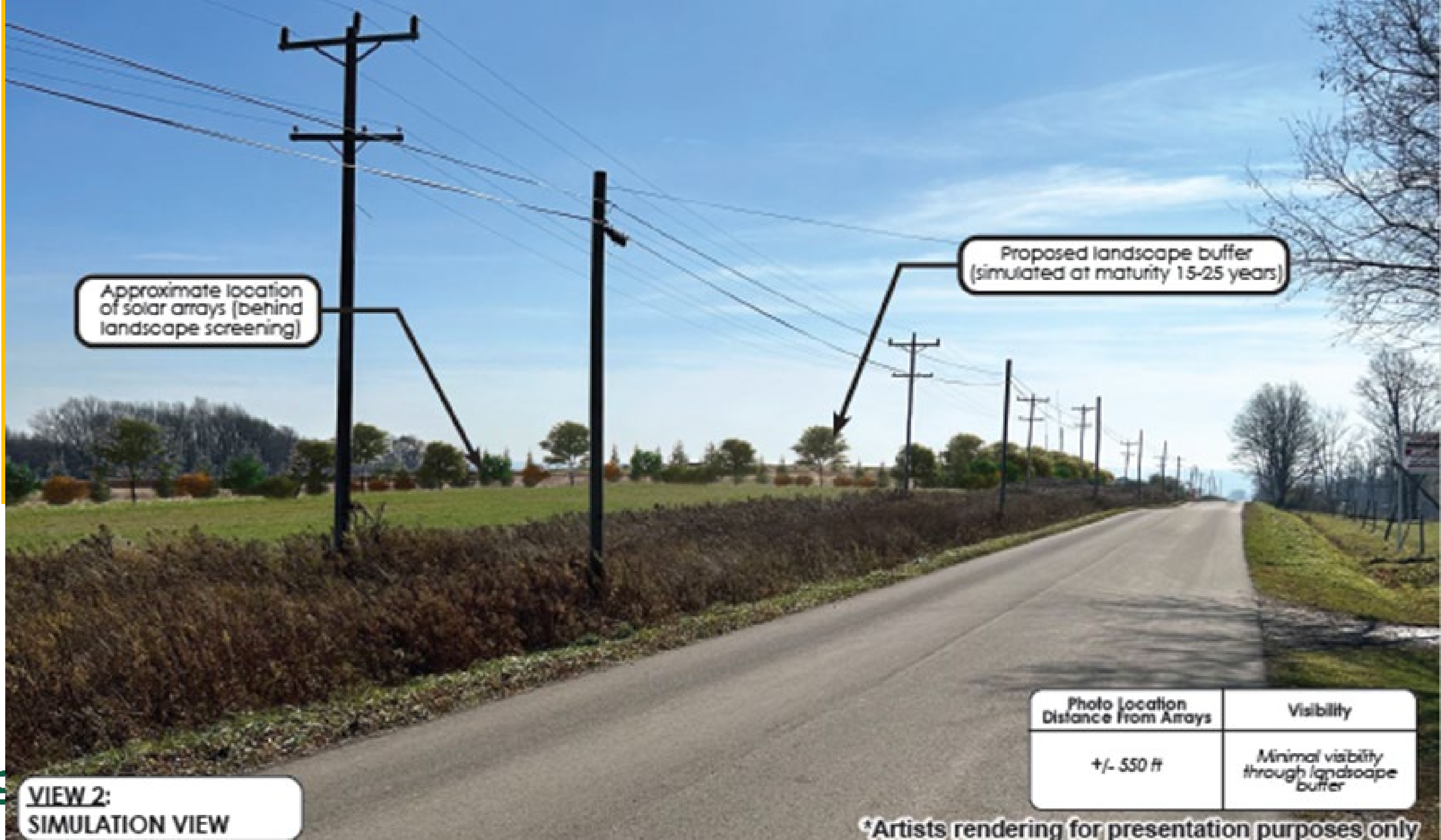
VIEW 1:
SIMULATION VIEW

Photo Location Distance from Arrays	Visibility
+/- 325 ft	Minimal visibility through landscape buffer

*Artists rendering for presentation purposes only



VIEW 2:
EXISTING CONDITIONS



Approximate location
of solar arrays (behind
landscape screening)

Proposed landscape buffer
(simulated at maturity 15-25 years)

Photo Location Distance From Arrays	Visibility
+/- 550 ft	Minimal visibility through landscape buffer

VIEW 2:
SIMULATION VIEW

*Artists rendering for presentation purposes only

Visual Impact



Solar Law Requirements

- Maximum lot coverage: 30% (<25%) ✓
- Maximum height: 20 feet (<10 feet) ✓
- Setback: Seeking waiver from Town Board
- No more than 10% cleared of trees (no tree clearing) ✓
- Debris removal and grass cutting (O&M plan) ✓
- Fence enclosures prevent access (site plan) ✓
- No glare (coatings, setback, screening, and tracking geometry) ✓
- Decommissioning end of life (plan submitted with cost estimate) ✓

Clymer Solar Project Benefits

- Provides a clean, renewable source of energy that will help reduce greenhouse gas emissions.
- Supports NYS's goal of generating 70% of the state's energy by renewable sources by 2030
- Residents can enroll in NYSERDA's Community Solar Program and save money on their electric bills
- Will not require Town, County, or State resources
- Returns investment to landowner
- PILOT Agreement/Host Community Agreement

A scenic mountain landscape with a person standing on a rock peak. The background shows rolling green hills and valleys covered in dense forests. In the foreground, a person is standing on a large, dark rock formation. The overall tone is serene and majestic.

Thank you!

Andy Welch
Senior Project Development Manager
awelch@ric.energy
917 819 1900